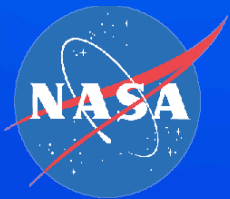

Tampa Bay: Everything you wanted to know but were too afraid to ask...

Julie Galkiewicz

University of South Florida
SCUBAnauts International



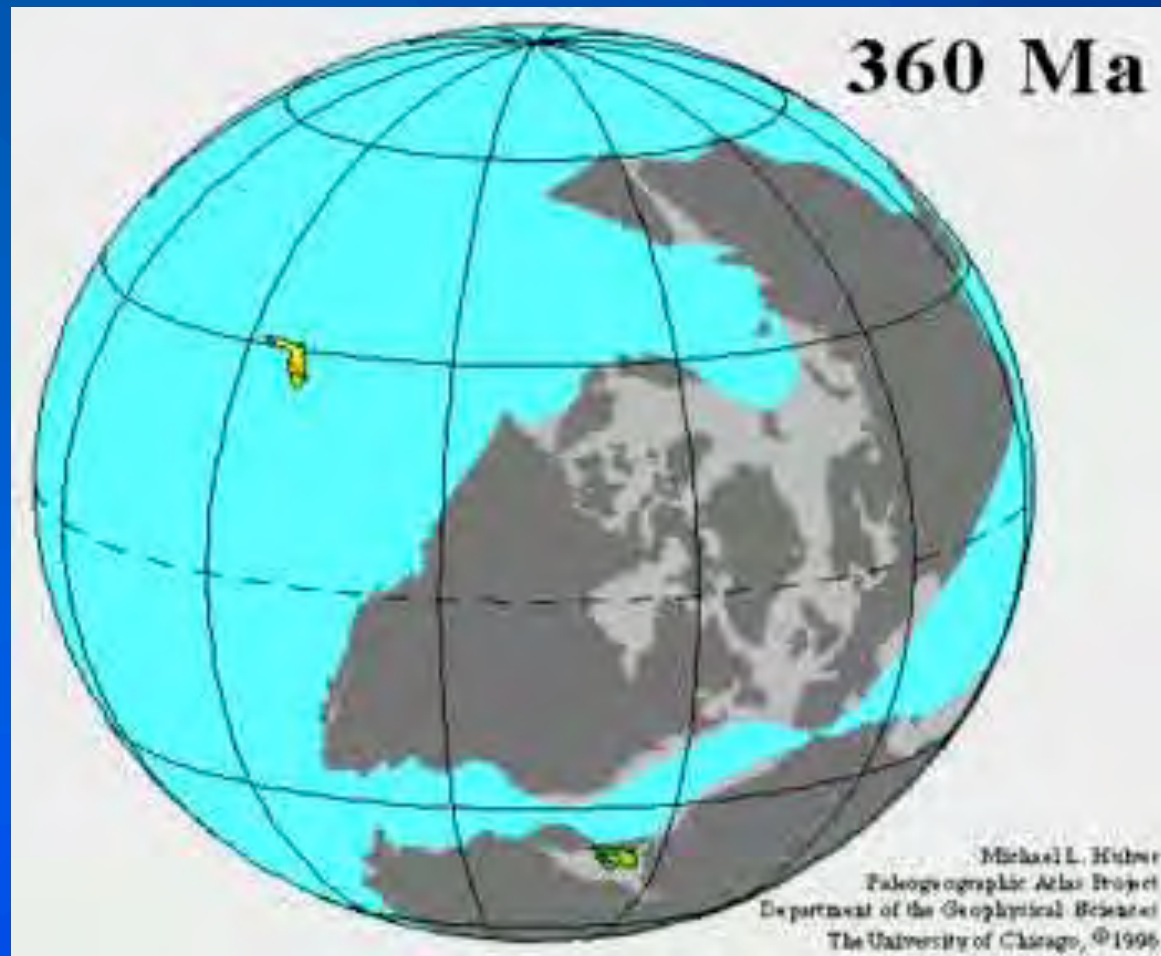
Lesson Outline



- Geologic History of Florida
- Geologic History of Tampa Bay
 - Karst & Karstification
- Biology of Tampa Bay
 - Fauna
 - Habitats
- Human Influences



Where does Florida come from?



Creation of the Bay

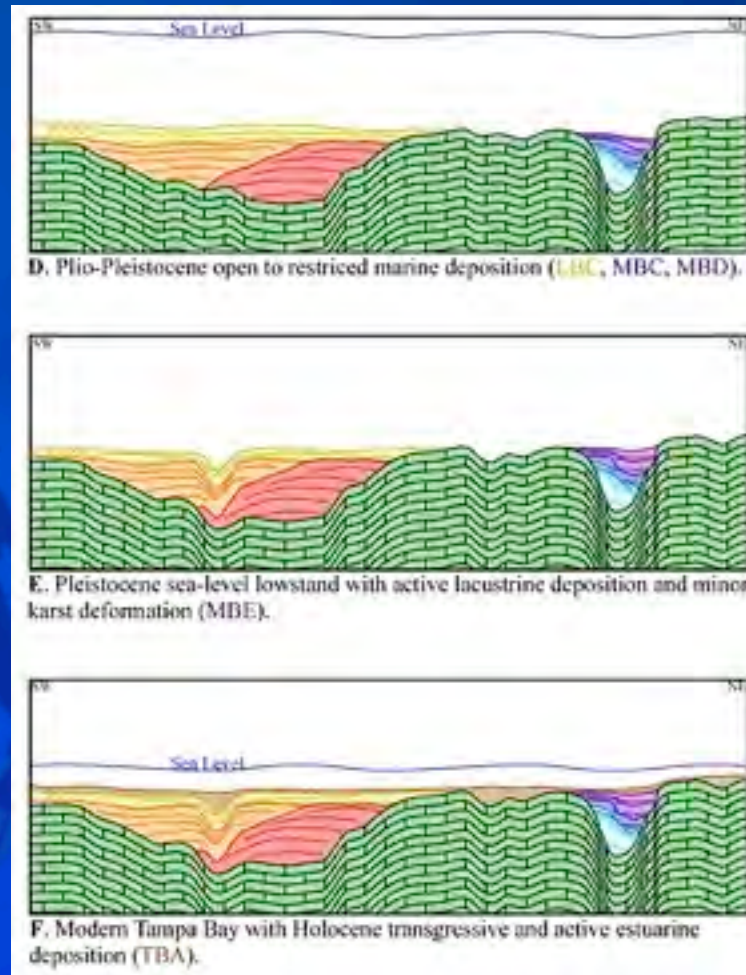
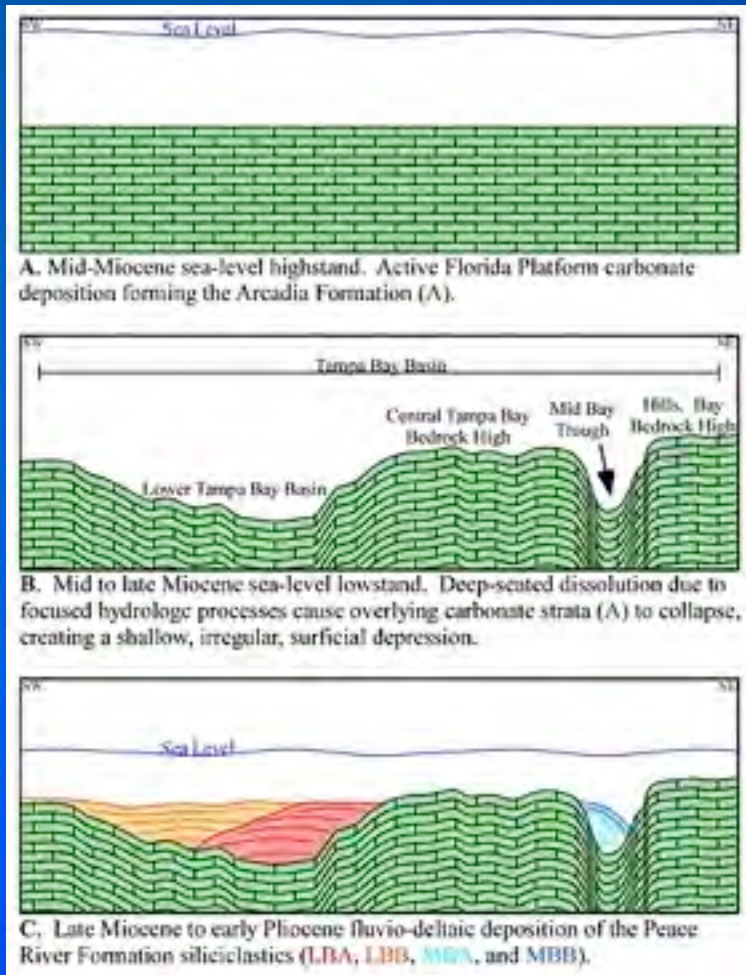


Figure: USGS



Tampa Bay Subsurface

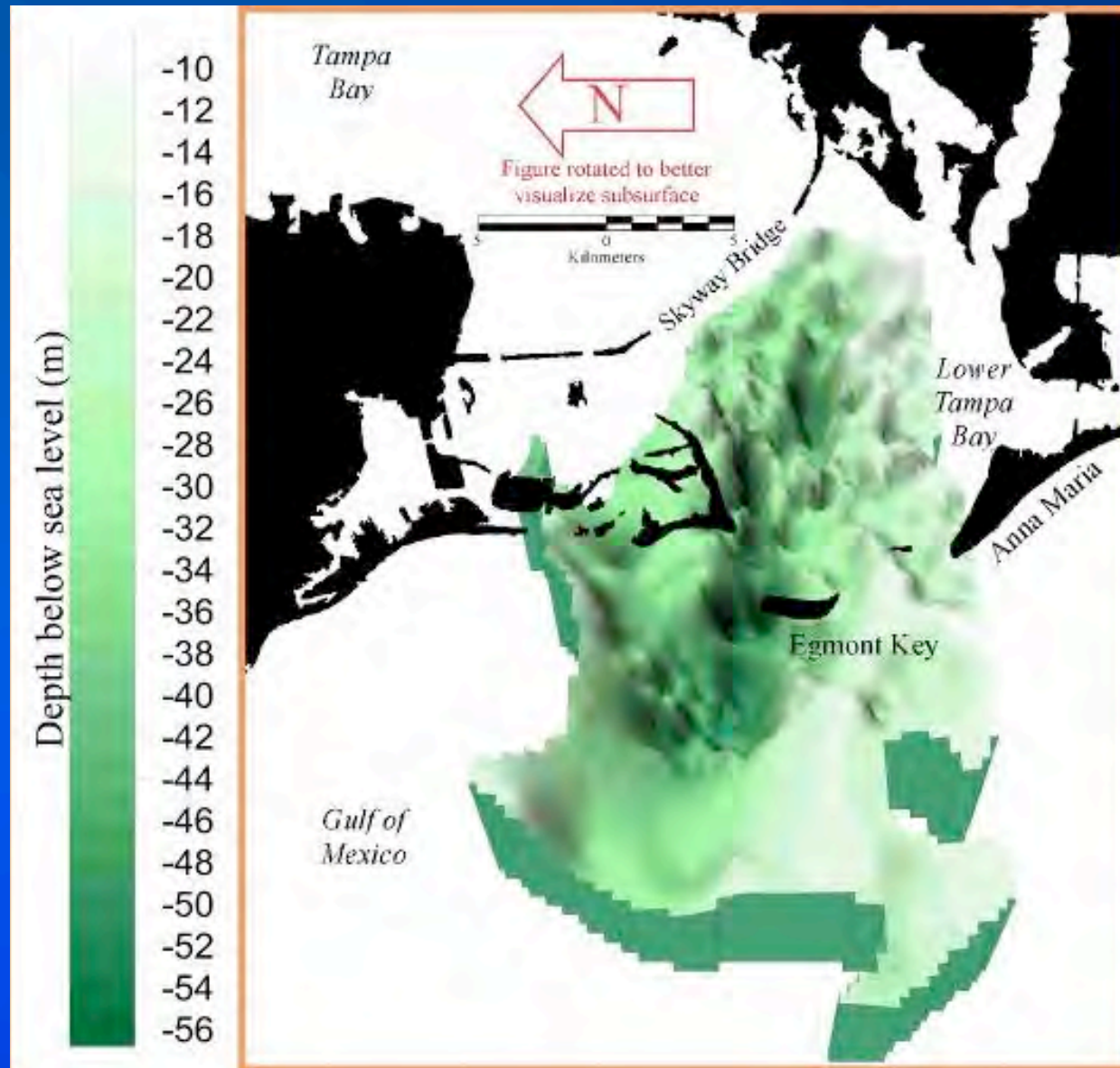
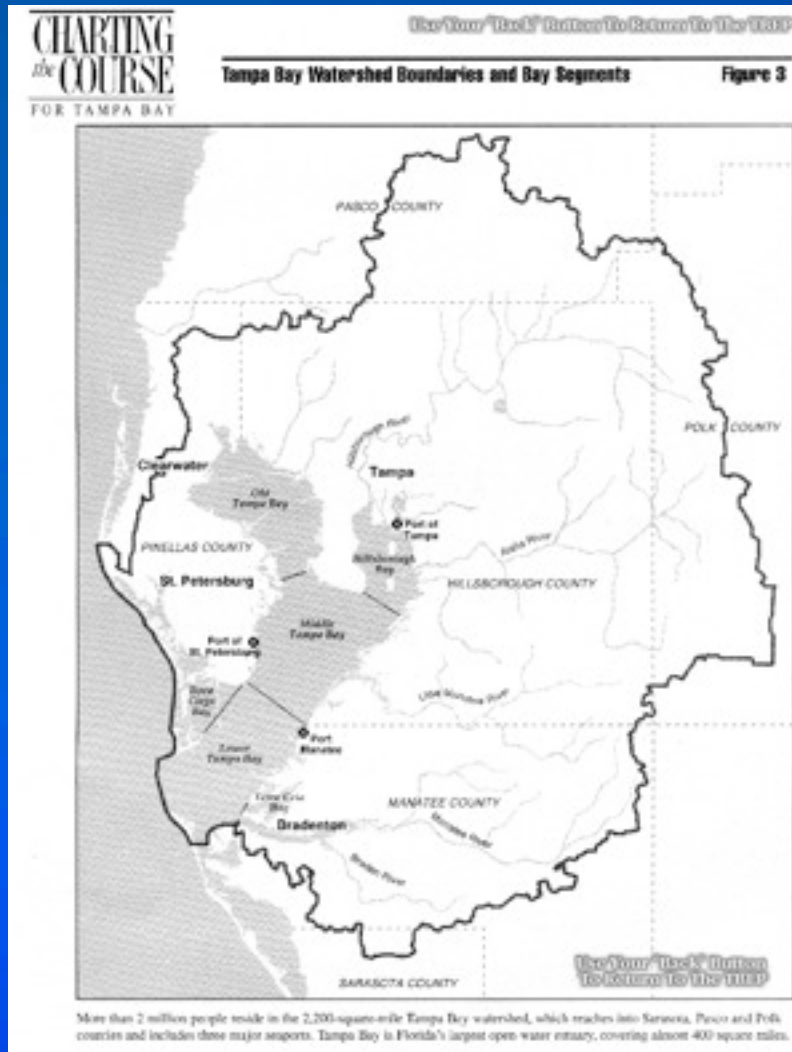


Figure: USGS



Where does the water come from?



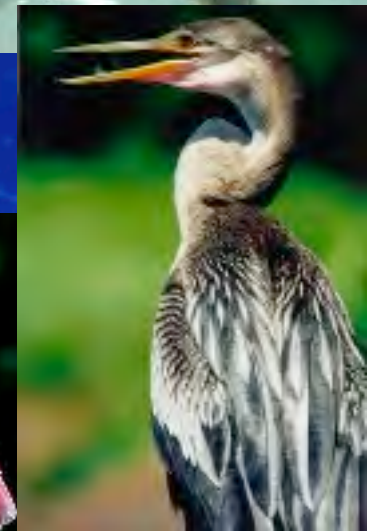
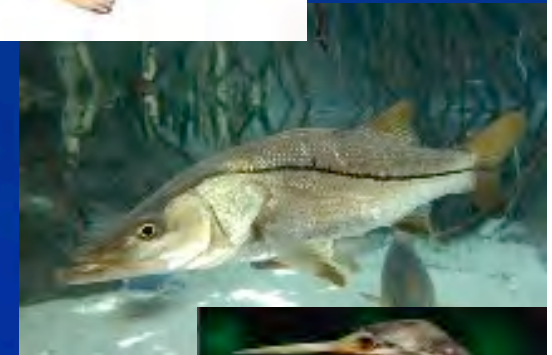
- Largest open-water estuary in Florida
 - Watershed covers nearly 2,200 sq. miles
- 100 tributaries flow into Tampa Bay



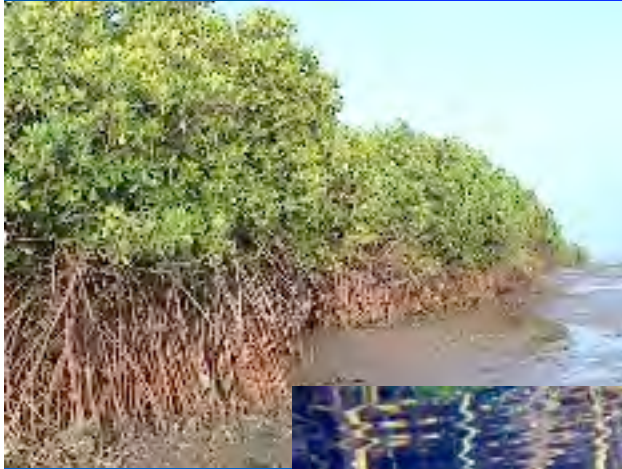
Tampa Bay Flora and Fauna



- More than 200 fish species found in the bay
 - Snook, redfish, spotted sea trout
- Mangrove islands support the most diverse waterbird nesting colonies in N. America
 - 40,000 pairs of 25 different species
- What other fish and birds have you seen in the bay?



Aquatic habitats



- Over 44% of coastal wetlands have been lost in the past 100 years
- Mangroves
 - Support nesting birds above water
 - Act as nurseries to juvenile fish and inverts
- Salt marshes and seagrass beds also provide important habitat



Human Influences



- **Pollution**
 - Dissolved nutrients
 - Harmful chemicals
 - Solid waste
- **Freshwater use**
 - Drains aquifer
 - Lowers river inflow
- **Overfishing**
- **Altered flow**
 - Rivers diverted
 - Dredging

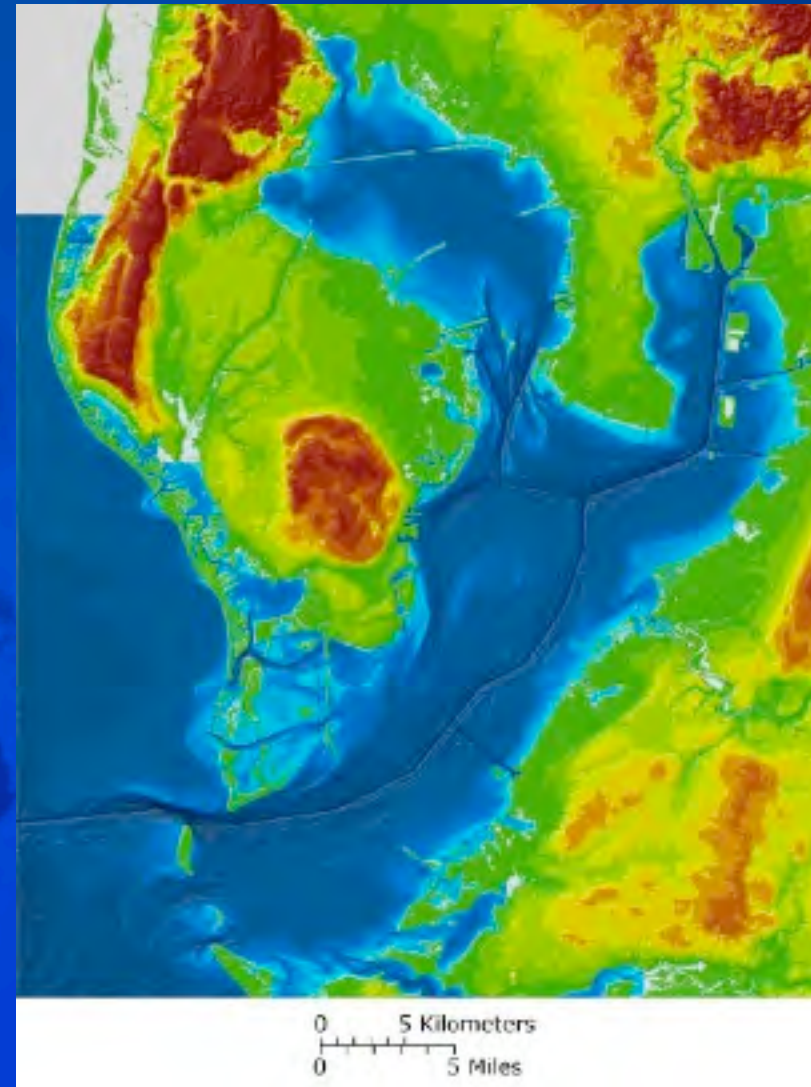


Image: USGS

Landsat 7 Satellite Image



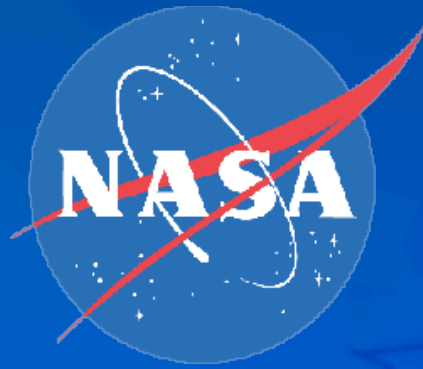
Further Information



- **Bay Soundings:**
 - <http://www.baysoundings.com/>
- **U.S. Geological Survey:**
 - <http://gulfsci.usgs.gov/tampabay>
- **Tampa Bay Species:**
 - <http://www.tbep.org/portrait/birds.html>



Acknowledgements



Also:

Depth Perception Dive Center

Dive Key West

Bill Jackson's

Private donors

Our volunteers

